

RHYTHM & ROOTS CAMPING GUIDELINES & INFORMATION

Welcome, campers! If there's anything we can do to make your stay more enjoyable, let us know. Camping staffers are available around the clock to help make your stay a pleasant one. *Laissez les bon temps rouler!*

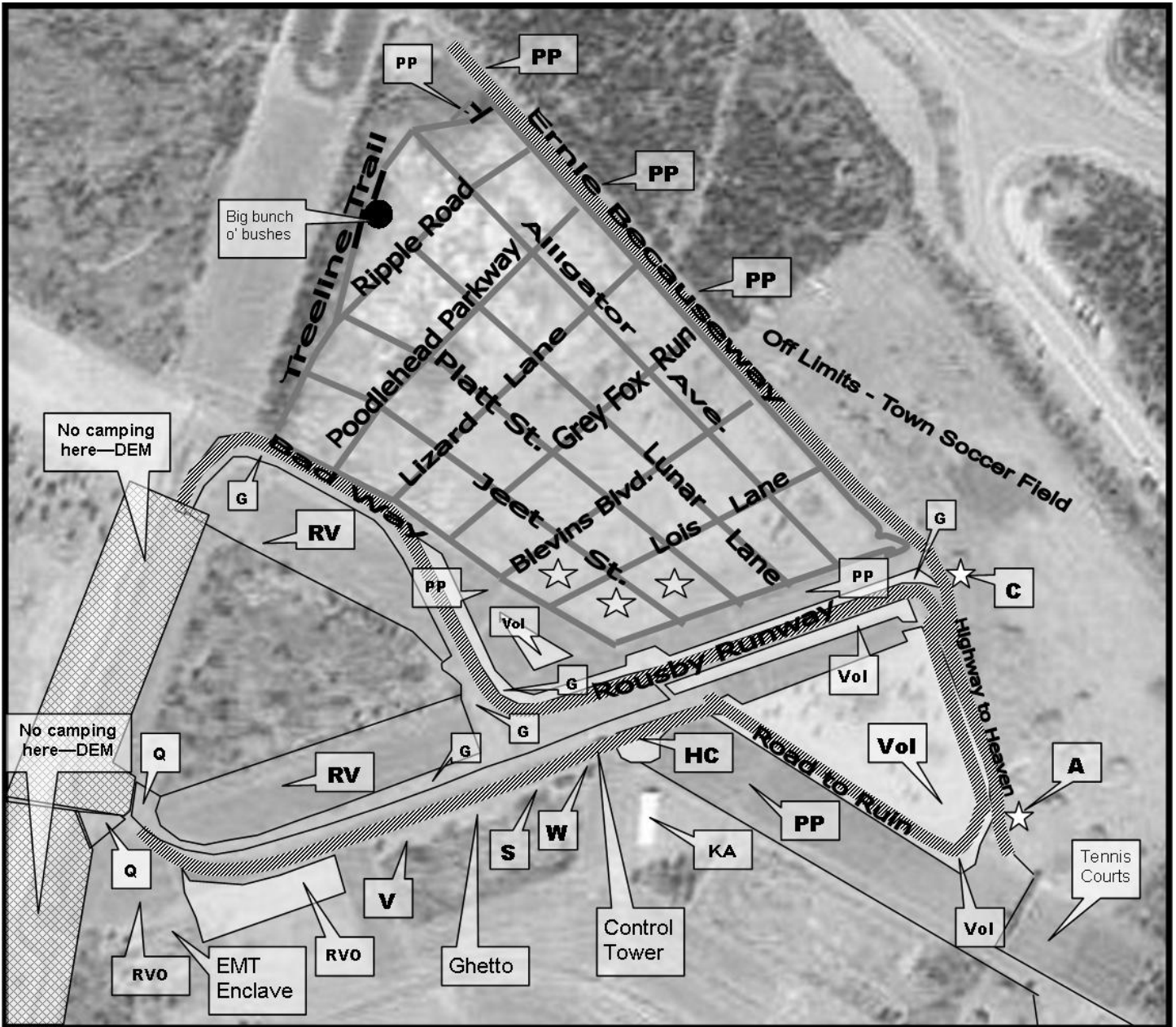
A few common-sense camping guidelines:

1. No saving of space in campground. All sites are first come, first served.
2. No extremely large pavilions (covered outdoor living/playing areas). All ticket holders are entitled to a fair share of camping space.
3. After setup, use perimeter parking for a roomier campsite.
4. Charlestown, our host community, strictly prohibits the possession of alcohol on park property.
5. Fires must be off the ground and contained, with a water bucket and/or fire extinguisher at hand. Fires may be prohibited entirely if conditions warrant. Absolutely no fireworks of any kind!
6. Fire lanes (streets) must be kept open at all times, as required by the Charlestown Fire Department.
7. No private golf carts, ATV's or electric scooters allowed in Ninigret Park without one million dollar liability insurance and prior approval by festival management.
8. Generator usage is limited to the RV areas, and is prohibited between 11 p.m. and 7 a.m.
9. Acoustic jamming only – no amplifiers! No drums after 1 a.m. in the campground.
10. Keep volume low on personal or vehicle sound systems. Main stage acts as well as artist recordings will be simulcast on our on-site radio station all weekend long. The frequency will be posted at the Info Booth.
11. **First Aid** tent is to the left of the main entrance. For on-site **medical** emergencies, call **913-908-0521** OR **518-261-4351**. Give map coordinates to emergency personnel and they will find you. You may also call **911**.
12. Speed limit 5 mph at all times — no exceptions — watch for children!
13. No pets! (There are local kennels nearby.)
14. Please turn off your car alarm while in the campground.
15. Please bag your trash and place it in or next to the receptacles. There will be trash pickup daily. Please separate your recyclables and put them in marked bins.
16. Actions that infringe on the rights and/or safety of other campers can result in removal from the campground and other penalties. The Golden Rule is to treat others as you wish to be treated! If you need to report a **security** issue, call **518-261-4352**.

NOTE: Please leave street signs, pennants, and other campground markers; replacing them increases the cost of putting on the festival each year. Thanks!

LOCAL STORES AND SUPPLIES

- Cumberland Farms: turn left out of park entrance, then right to Rt. 1. Take an immediate right. Store is 1.5 miles on the left.
- Charlestown Mini Super: 1/2 mile beyond Cumberland Farms on the left. Excellent meat and vegetable selection.
- Michael's Texaco – fuel, ice, great deli: turn left out of park entrance, then right to Rt. 1. Get into left-hand lane; make Uturn going south. On the left about 2 miles.
- Super Stop & Shop: turn left out of park entrance, then right to Rt. 1. Get into left-hand lane; make U-turn going south. On the right about 5 miles.
- Benny's – hardware, camping supplies, & household goods: turn left out of park entrance, then right to Rt. 1. Get into lefthand lane; make U-turn going south. On the right about 4 miles.
- Wal-Mart – the works. Same directions as Benny's.
- Home Depot – also near Benny's, about two miles further (westbound), second light after Stop & Shop on right.
- The Fantastic Umbrella Factory: turn right outside the park entrance; it's about a quarter of a mile down on the right. A Charlestown landmark!



LEGEND			
A	Main Camping Gate	C	Checkpoint Charlie
S	Showers	W	Water Stand
Q	Quiet Camping Areas	G	Grass Strip Camping
H	Handicap Camping	Vol	Staff Camping
RV/RVO	RV Camping / RV Overflow	KA	Kids Academy Pavilion
V	Vendor Camping	PP	Perimeter Parking
☆	Performer Camping Area	⊘	DEM Restricted Area—no camping or vehicles